

# QUALITY

MANUFACTURING SERVICES, INC.

WORLD-CLASS  
CONTRACT MANUFACTURING



**QMS** is a State-of-the-Art Full-Service Electronics Manufacturing Services provider, located in Central Florida's technology hub.

### *Diverse Industry Experience*

- Defense
- Aerospace
- Simulation
- Medical
- Life Safety
- Industrial
- Transportation
- Infrastructure
- Communications
- Intelligent Traffic
- Security
- Unmanned Craft

### PRINTED CIRCUIT BOARD ASSEMBLY

- NPI, DFM, Test Development
- Flex & Rigid-Flex Expertise
- Turn-key and Kit Assembly
- Prototype to Production Volumes
- 01005 and Ultra-Fine Pitch Capability
- BGA, LGA, QFN, WLCSP Packages
- AOI and X-Ray
- Electrical & Environmental Test
- Coating & Potting



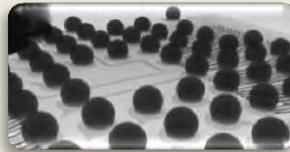
### INTEGRATED BOX BUILD

- Sub Assembly to Final Integration
- Full Functional Testing
- Burn-In
- Packaging Design
- Direct Shipment



### EXCEPTIONAL QUALITY

- ISO 9001:2008 Registered
- ITAR Registered
- IPC-A-610 Class 2 & 3
- J-STD-001
- UL / CSA / TUV / CCC / FM Global
- Traceability



400 Rinehart Road  
Lake Mary, FL 32746  
(407) 531-6000  
[sales@qmscfl.com](mailto:sales@qmscfl.com)

### *State-of-the-Art Facilities*



# QMS Technical Services

## PCB ASSEMBLY

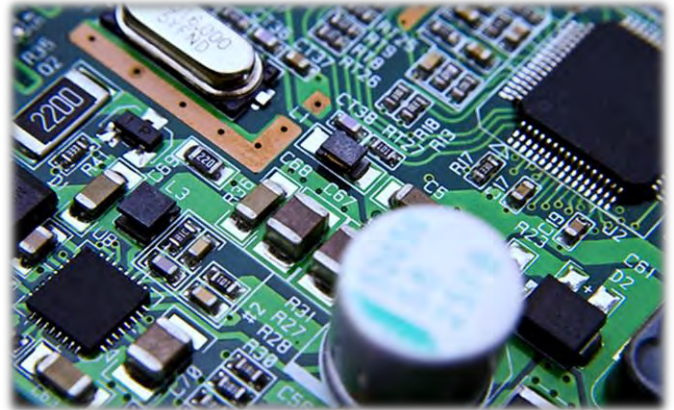
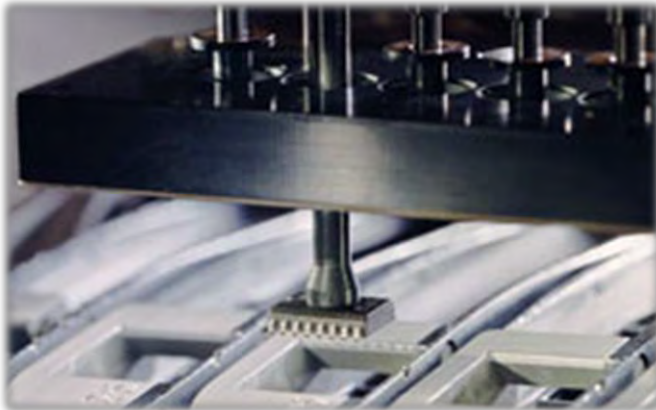
- Automated SMT with 6 Active Lines
- 01005, Micro BGA, LGA, WLCSP placement
- Automated Optical Inspection (AOI)
- Nitrogen Purge SMT Reflow
- Multi-Zone Convection Reflow Ovens
- Dedicated Pb/Pb-Free Wave Solder
- Dedicated Pb/Pb-Free Selective Solder
- X-Ray and Optical Microscopes
- XRF Analysis
- All Major Solder Chemistries
- Aqueous and No-Clean Flux Chemistries
- Rigid, Flex, and Rigid-Flex Platforms
- Conformal Coating and Potting
- New Product Introduction Analysis
- PTH Assembly
- Dedicated Prototype Assembly
- Closed Loop DI Aqueous In-line Wash
- Batch Saponifier Aqueous Wash

## ENGINEERING

- Design Review
- PCB Layout Review
- Design for Manufacturability
- Compliance Review
- Stencil Design
- Fixture Design
- Fixture Development
- Process Development
- Configuration Management

## TEST

- In-Circuit
- Flying Probe
- Functional
- Boundary Scan
- Environmental
- Device Programming
- High Voltage Testing
- System Level Testing
- Custom Test Development



The Lake Mary facility encompasses 44,000 ft<sup>2</sup> containing the most premier electronics manufacturing equipment. Static dissipative flooring, 5S Organizational Strategy, an active FOD prevention plan, environmental impact self-containment programs, and lean manufacturing techniques constitute a foundation supporting the highest technical capability in the EMS industry.

